

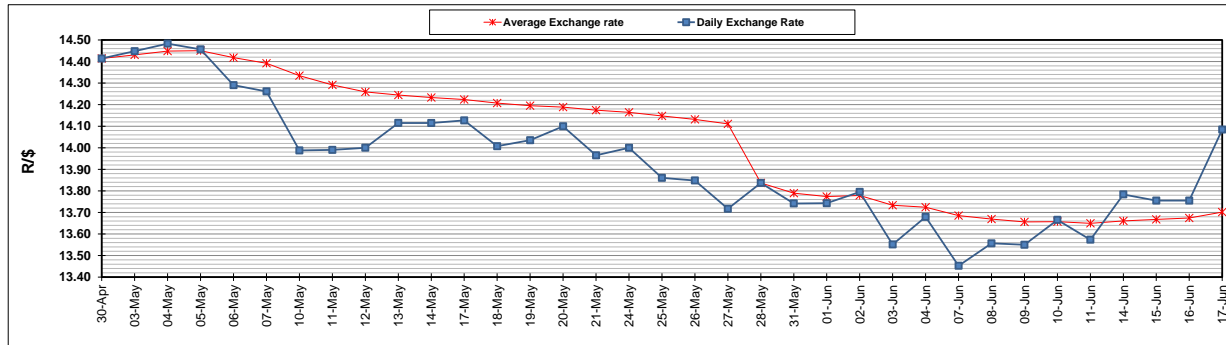
	PETROL 95 ULP	PETROL 93 ULP & LRP	DIESEL 0.05%	DIESEL 0.005%	ILL. PAR.
GAUTENG PUMP PRICE (SA c/l) AS FROM 02/06/2021	1,713.000	1,691.000	-	-	-
WHOLESALE PRICE (SA c/l) AS FROM 02/06/2021	-	-	1,466.620	1,471.020	877.488
SINGLE NATIONAL MAXIMUM RETAIL PRICE	-	-	-	-	1,102.000
BASIC FUEL PRICE - 17/06/2021 (SA c/l)	750.022	741.903	733.221	736.699	710.242
PRESS RELEASE CONTRIBUTION TO BFP 02/06/2021 - 17/06/2021 (SA c/l)	717.170	705.170	679.630	684.030	664.128
UNIT OVER/(UNDER) RECOVERY - 17/06/2021 (SA c/l)	(32.852)	(36.733)	(53.591)	(52.669)	(46.114)
AVERAGE BASIC FUEL PRICE 28/05/2021 - 17/06/2021	718.705	710.477	700.242	703.756	678.832
AVERAGE UNIT OVER/(UNDER) RECOVERY 28/05/2021 - 17/06/2021	0.465	(3.307)	(24.612)	(23.926)	(18.704)

ANALYSIS MOVEMENT OF AVERAGE OVER/(UNDER) RECOVERY

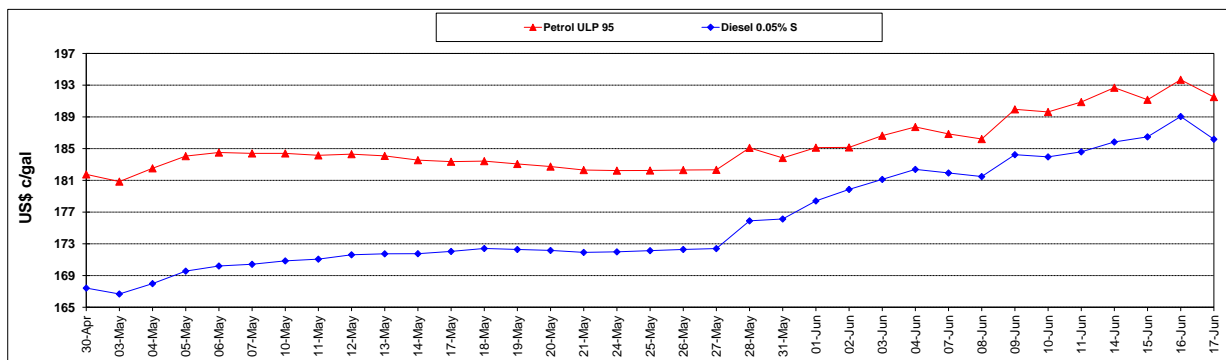
	PETROL 95	PETROL 93	DIESEL 0.05%	DIESEL 0.005%	ILL. PAR.
- MOVEMENT IN INTERNATIONAL PRODUCT PRICES	(21.015)	(24.541)	(45.540)	(44.959)	(38.992)
- MOVEMENT IN EXCHANGE RATE	21.480	21.234	20.928	21.033	20.288
AVERAGE UNIT OVER/(UNDER) RECOVERY 28/05/2021 - 17/06/2021	0.465	(3.307)	(24.612)	(23.926)	(18.704)

R/\$ EXCHANGE RATE - (R/\$14.0843- 17/06/2021)

EXCHANGE RATE USED IN BASIC FUEL PRICE



INTERNATIONAL PRODUCT PRICES OF BASKET USED IN BASIC FUEL PRICE



BASIC FUEL PRICE IN SA CENTS PER LITRE

